



feed silos and delivery system



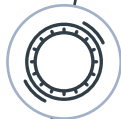


// SILO 20.20

40

40 YEARS OF EXPERIENCE

Symaga is backed by 40 years of experience in silos manufacturing.



Z600. GALVANIZATION

Silos made of galvanized corrugated steel with a 600g/m² zinc coating. More than 37% of galvanization than others suppliers. More corrosion-resistant and larger service life.



EU. EUROCODE

Manufacture according to Eurocode 1.4. Under request, calculation in other norms and calculation of different coefficients seismic, snow & wind load, to adapt to geographic areas.

4.0

4.0. INDUSTRY SGA & MES

Production with state-of-the-art machinery, which facilitates assembly. Optimisation of manufacturing management, raw material and finished product warehousing.

CE

CE. CERTIFICATED PRODUCTION

Manufacture under norm En-1090, CE Marking



PRODUCCIÓN SOSTENIBLE

We are committed to sustainable manufacturing with a photovoltaic solar energy generation plant that covers 70% of the plant's electricity consumption and an environmental plan for waste management, ISO 45001.



WIDE RANGE

Capacities from 4,77m³ to 85m³

6 diameters: : 1.80m, 2.10m, 2.50m, 2.75m, 3.20m, 3.80m. Hoppers: 45°, 60° y 67°.



SEMI-AUTOMATIC LID

Included in silos with mechanical and pneumatic filling. For pneumatic load includes rubber gasket and lock

With opening and closure locking system from the ground.



OPTIMAL FEED FLOW

Inner joint between cone and collars to avoid obstructions.
Round head screw in hopper.



FRESH FEED

Galvanization and waviness allow to reduce inner temperature avoiding condensation.



DRIP EDGE

Lower Edge bent to divert drops of water through body sheet, protecting hopper and boots from humidity.



HOPPER AND BRACING

Hopper sheets are die-formed edge for tight fit with the outlet.

Hopper sheet is fixed to cylinder at a flat part of the wave avoiding damage by bolt pressure and corrosion

Leg's design along with the cross bracing and anchor plate in one piece, facilitate loads transmission, increasing resistance and stability.



REINFORCE ROOF

Roof rigidity and resistance are determined by the ribbed end and the joint reinforcements. State-of-art manufacture of roof panels for easy assembly.



SAFE LADDERS

Resistant, with roof's handrail, security protections and slip-resistant ladder rungs for better footing in all weather conditions.

Fixed or removable option to prevent unauthorized access.

// ACCESSORIES SILOS



PNEUMATIC FILLING



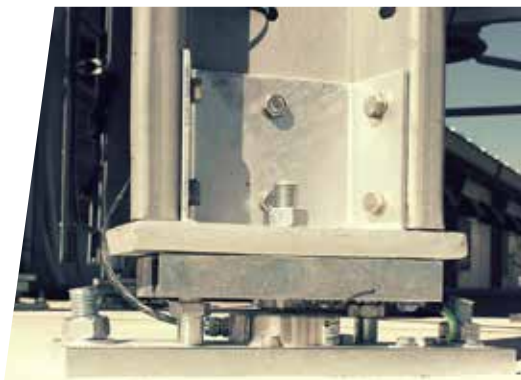
ROOF VENT



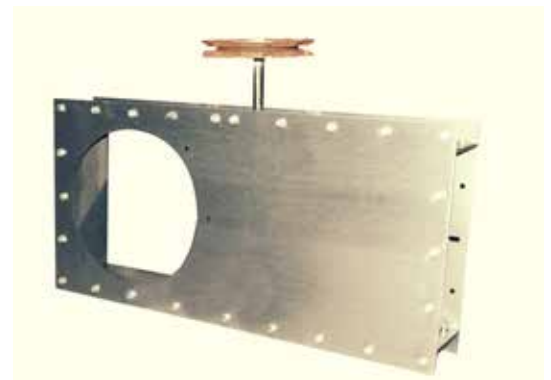
DOUBLE MANHOLE



BOLTING PROTECTION



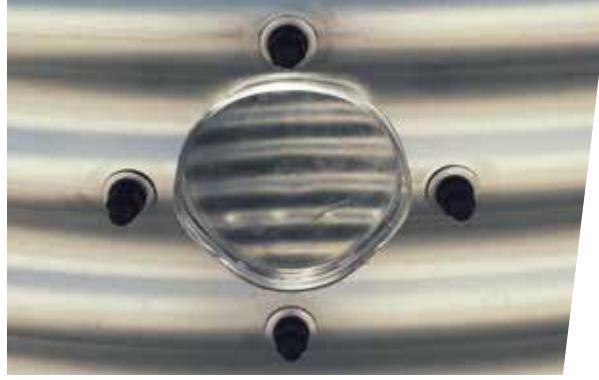
WEIGHING KIT



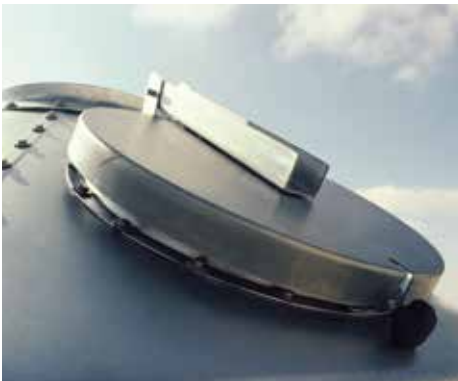
RACK AND PINION GATE



LADDER



LEVEL VIEWER



ROOF INSPECTION DOOR



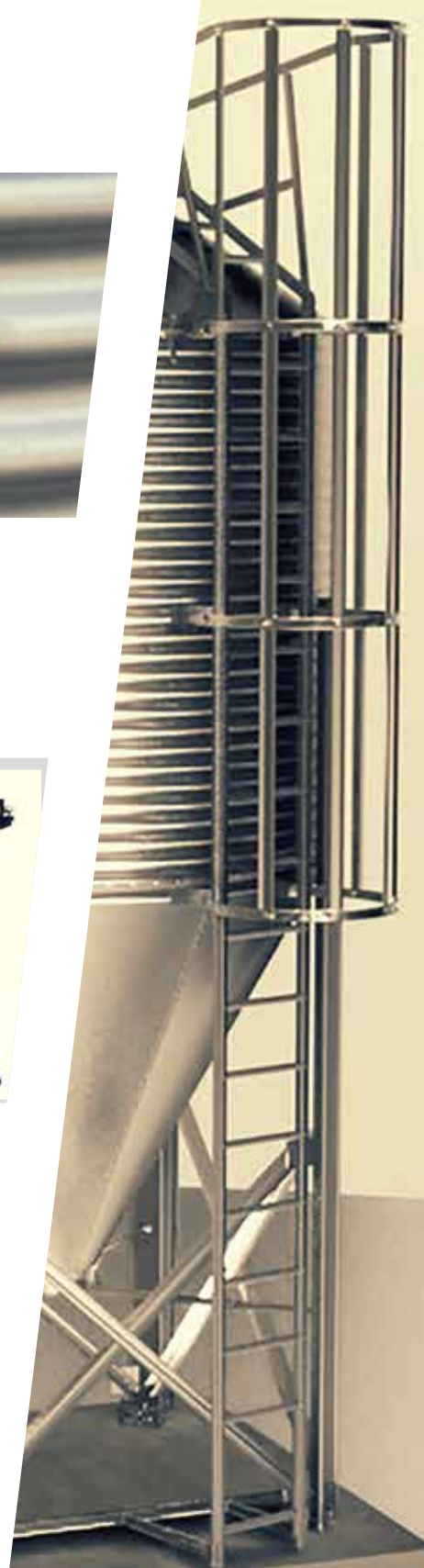
LEVEL SENSORS



AUXILIARY NOZZLE IN HOPPER



GALVANIZED NOZZLE



// DELIVERY SYSTEM

FLEX AUGER

Safe, quick and direct transport for every kind of feed (granules, flour, pellet, mix). Keeps the granules intact.

CAPACITY

Different models from 400 kg/h to 4.000 kg/h in 55, 75, 90, and 125 mm diameter.



CONTROL UNIT

Plastic or stainless steel.
Diameters: 55, 75, 90 y 125mm.

Easy access to the interior.
Automatic safety sensor to stop and start the motor.

GEARED MOTOR

Power 0.5, 1 & 1.5 hp
Monophase (110-220 V) and triphase (230/400 V).

BOOTS

Made in stainless steel for tubes with diameters 55, 75, 90 y 125mm.

Options: 1 to 4 exits and discharge angle of 0° or 30°.
With transparent inspection hatch.

CONES

15° cone made of polypropylene.

Metallic boot with different outlet options.

TUBES AND CORNERS

Different diameters: 55, 75, 90 and 125mm.

Manufacture in PVC with additives which reduce degradation by ultraviolet light and internal friction.

CONTROL PANEL

Power: 0.5, 1 & 1.5 HP.
Monophase and triphase.

3 positions: stop, automatic and manual.

With reset button.

OUT DROPS

For line tubes of Ø 55, Ø60, Ø 75, Ø90 and Ø125 mm adn for drop tubes of Ø63, Ø70 and Ø110mm. Different designs.





CHAIN

Modular and flexible transport. Adaptable to different type of instalations.

CAPACITY

Capacity transport: 1500 kg/h.



DRIVE UNITS

Made in stainless steel.
Three security system.
With tension regulator.

LOAD UNIT

Made in stainless steel.
It is available with 1 or 2 outlets.
Closing mechanism to regulate transport capacity.

CORNERS

90° angles .

SILO CONNECTION

Made of stainless steel or pvc.
With opening and closing slide.

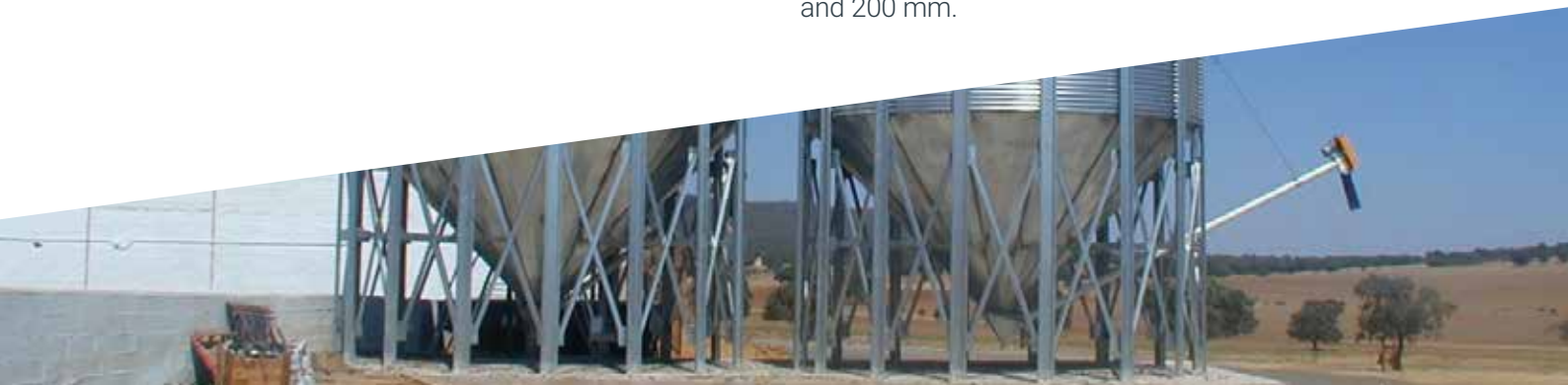


AUGER

Fast, high-capacity, solid-core transport based on a tubular conveyor with a rigid auger.

CAPACITY

We have several models from 4000 kg/h to 20,000 kg/h. different lengths and diamters and productions based on the diameter of the internal thread, 127, 160 and 200 mm.



// TECHNICAL SPECIFICATION

	Model	Ø		Nº ring	Hopper slope	Nº legs	Capacity			Filling height		Total height with safety cage	
		m	feet				m³	feet³	tons*	m	feet	m	feet
4 LEGS	G01SG180G60M1	1.80	6	1	60	4	4,54	160,33	2,95	3,79	12.43	4.41	14,49
	G01SG180G60M2			2	60	4	7,55	266,63	4,91	4,93	16.17	5.55	18,23
	G01SG180G60M3			3	60	4	10,56	372,92	6,86	6,07	19.91	6.69	21,97
	G01SG210G60M1	210	7	1	60	4	6,61	233,43	4,30	4,15	13.61	4,68	15,36
	G01SG210G60M2			2	60	4	10,70	377,87	6,96	5,29	17.35	5,82	19,10
	G01SG210G60M3			3	60	4	14,79	522,30	9,61	6,43	21.09	6,69	22,84
	G01SG210G60M4			4	60	4	18,88	666,74	12,27	7,57	24.83	8,10	19,28
	G01SG210G67M1	210	7	1	67	4	7,72	272,63	5,02	4,68	15,35	5,21	17,10
	G01SG210G67M2			2	67	4	11,81	417,07	7,68	5,82	19,09	6,35	20,83
	G01SG210G67M3			3	67	4	15,91	561,86	10,34	6,96	22,83	7,49	24,57
	G01SG210G67M4			4	67	4	20,01	706,65	13,01	8,10	26,57	8,63	28,31
	G01SG250G60M1	250	8	1	60	4	10,28	363,04	6,68	4,65	16,25	5,04	16,53
	G01SG250G60M2			2	60	4	16,11	568,92	10,47	5,79	18,99	6,18	20,27
	G01SG250G60M3			3	60	4	21,94	774,80	14,26	6,93	22,73	7,32	24,01
	G01SG250G60M4			4	60	4	27,77	980,69	18,05	8,07	26,47	8,46	27,75
	G01SG250G60M5			5	60	4	33,60	1.186,57	21,84	9,21	30,21	9,60	31,49
	G01SG250G67M1	250	8	1	67	4	11,62	410,36	7,55	5,31	17,42	5,69	18,66
	G01SG250G67M2			2	67	4	17,45	616,24	11,34	6,45	21,16	6,83	22,43
	G01SG250G67M3			3	67	4	23,28	822,13	15,13	7,59	24,90	7,97	26,14
	G01SG250G67M4			4	67	4	29,11	1.028,01	18,92	8,73	28,63	9,11	29,88
G01SG250G67M5	5			67	4	34,94	1.233,90	22,71	9,87	32,37	10,25	33,62	
6 LEGS	G01SG275G60M1	275	9	1	60	6	12,42	438,61	8,07	4,89	16,04	5,21	17,09
	G01SG275G60M2			2	60	6	19,19	677,69	12,47	6,03	19,78	6,35	20,83
	G01SG275G60M3			3	60	6	25,96	916,77	16,87	7,17	23,52	7,49	24,57
	G01SG275G60M4			4	60	6	32,73	1.155,85	21,28	8,31	27,26	8,63	28,31
	G01SG275G60M5			5	60	6	39,50	1.394,93	25,68	9,45	31,00	9,77	32,05
	G01SG320G60M1	320	10	1	60	6	18,27	645,20	11,88	5,43	17,81	5,60	18,37
	G01SG320G60M2			2	60	6	27,44	969,04	17,84	6,57	21,55	6,74	22,11
	G01SG320G60M3			3	60	6	36,61	1.292,87	23,80	7,71	25,29	7,88	25,85
	G01SG320G60M4			4	60	6	45,78	1.616,71	29,76	8,85	29,03	9,02	29,59
	G01SG320G60M5			5	60	6	54,95	1.940,54	35,72	9,99	32,77	10,16	33,32
8 LEGS	G01SG380G45M1	380	12,5	1	45	8	25,79	910,77	16,76	4,99	16,38	4,99	16,38
	G01SG380G45M2			2	45	8	39,42	1.392,11	25,61	6,18	20,28	6,18	20,28
	G01SG380G45M3			3	45	8	53,05	1.873,44	34,47	7,37	24,18	7,37	24,18
	G01SG380G45M4			4	45	8	66,68	2.354,78	43,33	8,56	28,09	8,56	28,09
	G01SG380G60M1	380	12,5	1	60	8	31,14	1.099,70	20,23	6,24	20,48	6,24	20,48
	G01SG380G60M2			2	60	8	44,77	1.581,04	29,09	7,43	24,38	7,43	24,38
	G01SG380G60M3			3	60	8	58,4	2.062,38	37,95	8,62	28,28	8,62	28,28
	G01SG380G60M4			4	60	8	72,03	2.543,72	46,8	9,81	32,19	9,81	32,19

* Capacity in tons is calculated at 0,65 tons/m3, for free flowing material.

Specifications for additional sizes and hopper openings are available.

Products not considered as free flowing materials not to be stored in these silos (soybean meal, cotton seed meal, hot feeds)

Consult technical department when is doubt about specific material.

Specifications subject to change without notice.



FACTORY AND OFFICES

📍 Ctra. de Arenas, km 2,3 • 13210 Villarta de San Juan • Ciudad Real/Spain

☎ +34 926 64 04 75 ✉ symaga@symaga.com 🌐 symaga.com