

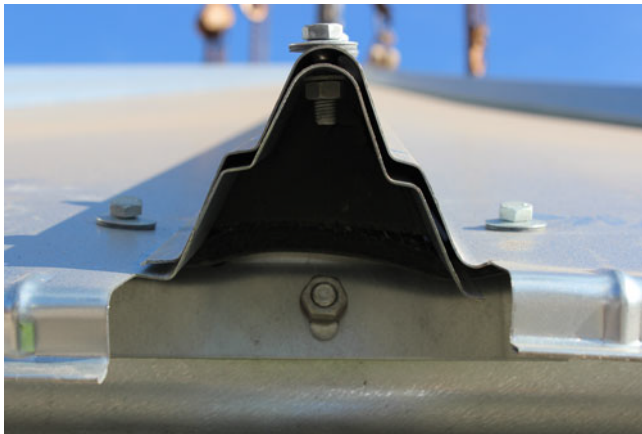
FOAM
EAVE CLOSE

ROOF

FILE 5.1

VERSION 2. 14/06/2021

COD. AS****CIALE



TECHNICAL SPECIFICATIONS

Sealing system composed for insulation parts type FOAM located on silo eave and the roof collar to avoid snow, rain, insects, animals, etc.

USES

- Better waterproofing through full sealing roof – cylinder
- Air movement focused on aeration roof

INCOMPATIBILITIES Incompatible with the eaves skirt. The eaves closure is placed on the wave of the roof sector in its initial and final part and is made up of extruded polystyrene pieces, while the eaves skirt is made up of a folded sheet placed in the eaves connection.

INCLUDES In ceilings that have more than one overlapping sector, the overlap FOAM is included

RESTRICTIONS Not usable in silos of 3 and 3.5 meters.

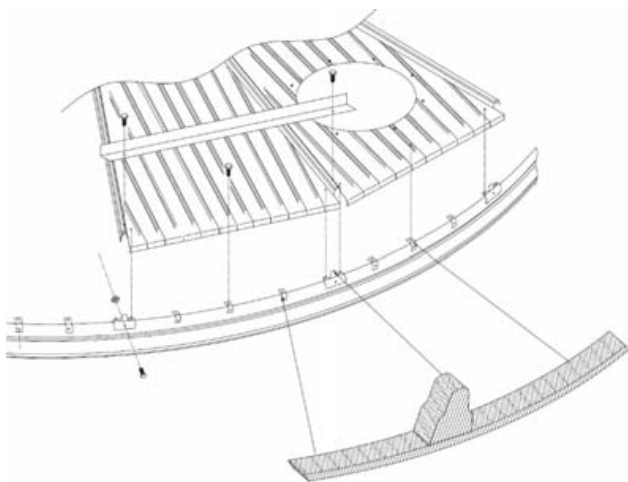
PARTS AND MATERIALS

1 INSULATOR ROOF WAVE

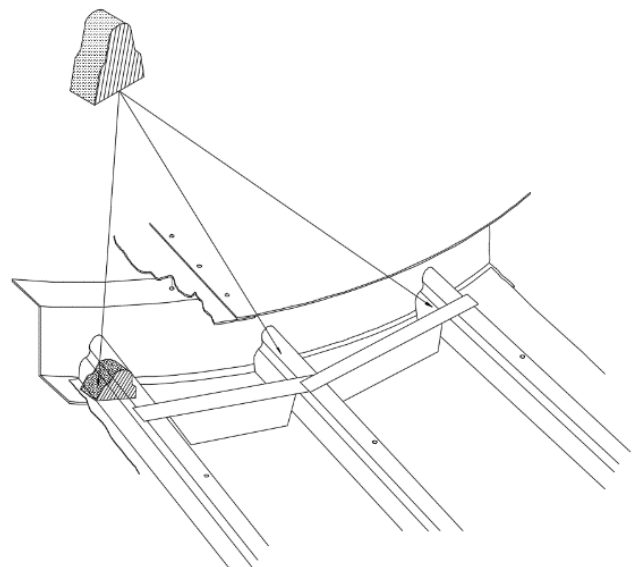
- On the roof collar
- MATERIAL: Cross-linked polyethylene foam
- Density: 28 Kg/ m3
- Lengthening 23°C (longitudinal): 121%
- Lengthening a 23°C (transversal): 115%
- Water capacity: 1%

2 INSULATOR ROOF EAVE

- On the roof eave
- MATERIAL: Cross-linked polyethylene foam
- Density: 28 Kg/ m3
- Lengthening 23°C (longitudinal): 121%
- Lengthening a 23°C (transversal): 115%
- Water capacity: 1%



INSULATOR ROOF WAVE



INSULATOR ROOF EAVE