

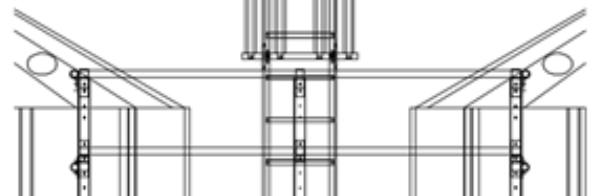
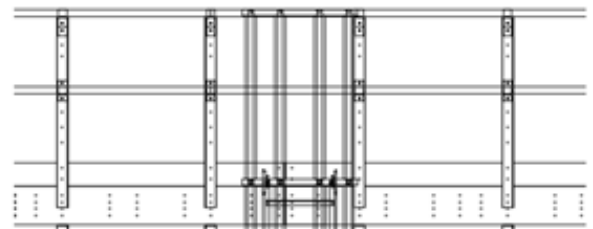
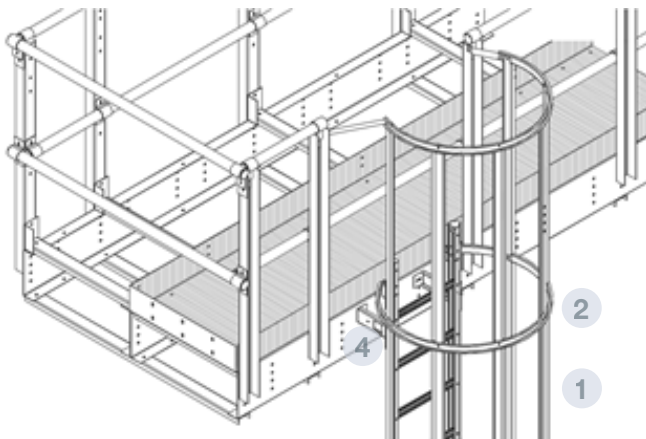
## LADDER TO PLATFORM BETWEEN SILOS

## ACCESSORIES SUPPLEMENTARY STRUCTURES



FILE 6.13  
VERSION 2. 31/08/2021

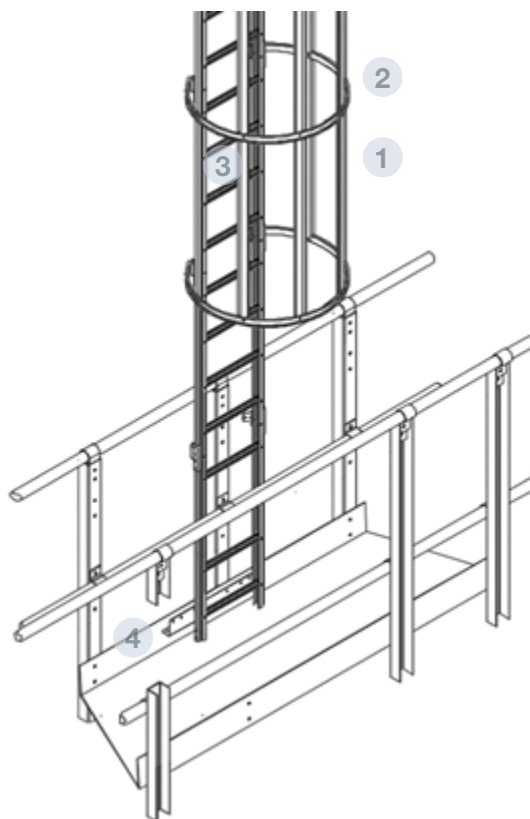
COD AS\*\*ESC



## TECHNICAL SPECIFICATIONS

Vertical ladder from the catwalk between silos to the main catwalk, complying with the regulation UNE-EN ISO 14222-1/2/3/4.

The ladder is connected to the platform through an angular profile and to the catwalk through the ladder support.



## PARTS Y MATERIALS

- 1** RAIL
  - 6 rails located every section of 1140mm.
  - MATERIAL: Galvanized steel S 280 GD Z 600 t= 1.5 mm
- 2** SAFETY CAGE
  - 1 every section of 1140 mm
  - MATERIAL: acero galvanizado S 280 GD Z 600 t= 2 mm
- 3** RUNGS
  - Connected every 285mm section.
  - Length: 458 mm
  - MATERIAL: Galvanized steel S 280 GD Z 600 t= 1.5 mm
- 4** RAIL SUPPORT
  - Connecting the catwalk to the silo
  - MATERIAL: Galvanized steel S 280 GD Z 600 t= 3 mm
- 5** CONNECTION TO THE PLATFORM
  - "L" 60x100x600 cold formed profile for the ladder-platform connection. Galvanized steel S 280 GD Z 600 t= 3 mm