

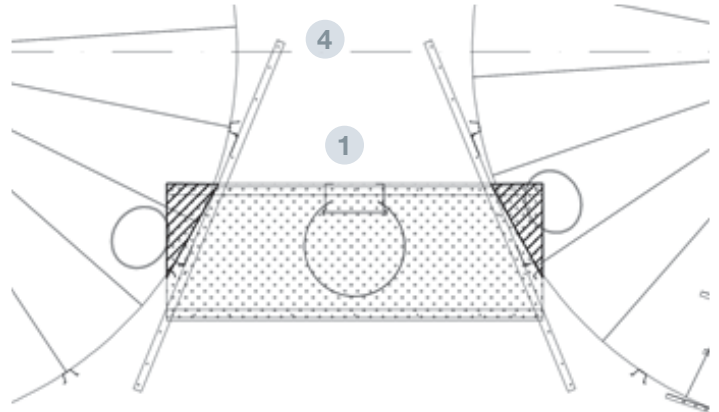
Platform between silos and ladder.
Accessories. Supplementary structures

PLATFORM BETWEEN SILOS

ACCESSORIES SUPPLEMENTARY STRUCTURES



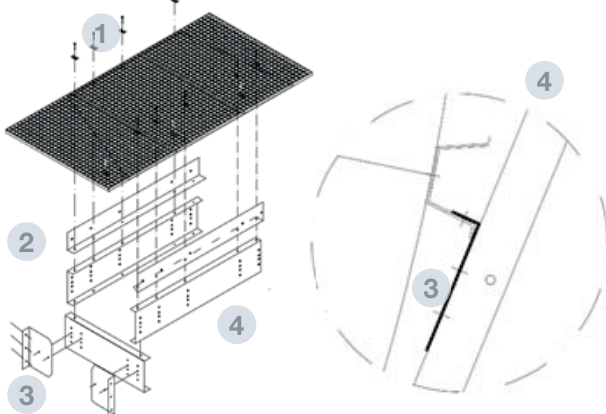
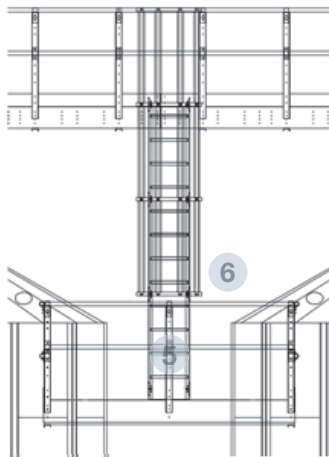
FILE 6.12
VERSION 2. 11/08/2021
COD. ASPLATENTRE*



TECHNICAL SPECIFICATIONS

Platform supported on 4 stringers, fixed to the silo reinforcements in the penultimate ring.

Can be standard floor or grid floor, handrail is included allowing access to the inspection doors of both silos.



PARTS AND MATERIALS

- 1 FLOOR**
 - Standard or grid floor to be placed on the stringers.
 - Material standard floor: Galvanized steel S280 GD Z600 MAC t= 3mm
 - Material grid: Trammex 30x30-25x2 Galvanized
- 2 FOOT PROTECTION**
 - Folded sheet for the floor-stringer connection.
 - Material: Acero galvanizado S280 GD Z600 MAC t= 3mm
- 3 LEG CLIP**
 - Folded sheet for the reinforce connection.
 - Material: Galvanized steel S280 GD Z600 MAC t= 3mm
- 4 STRINGER**
 - "U" 263x3000 profile, folded sheet, representing the main structure of the platform.
 - Material: Galvanized steel S280 GD Z600 MAC t= 3mm
- 5 HANDRAIL BRACKET**
 - "U" 263x3000 profile, folded sheet, representing the main structure of the platform.
 - Material: Galvanized steel S280 GD Z600 MAC t= 3mm
- 6 HANDRAIL TUBE**
 - TUBE Ø48x3000x1,5mm
 - Material: Galvanized steel
- 7 CLIPS**
 - Handrail tube- handrail bracket connection clips.
 - Material: Galvanized steel S280 GD Z600 MAC t= 3mm
- 8 STOPPER**
 - Used to close the handrail tube at the end.
 - Material: Polypropylene

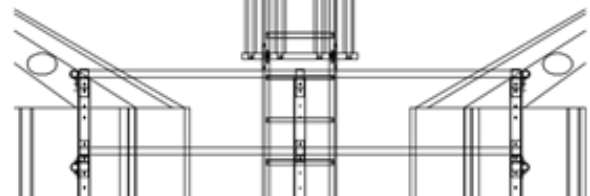
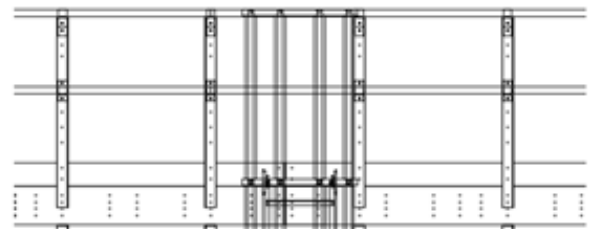
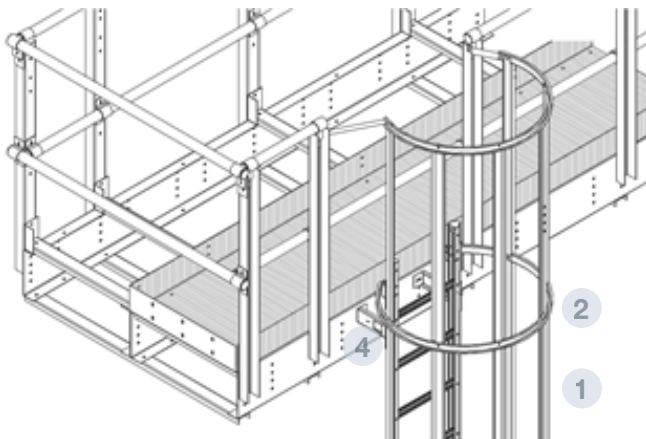
LADDER TO PLATFORM BETWEEN SILOS

ACCESSORIES SUPPLEMENTARY STRUCTURES



FILE 6.13
VERSION 2. 31/08/2021

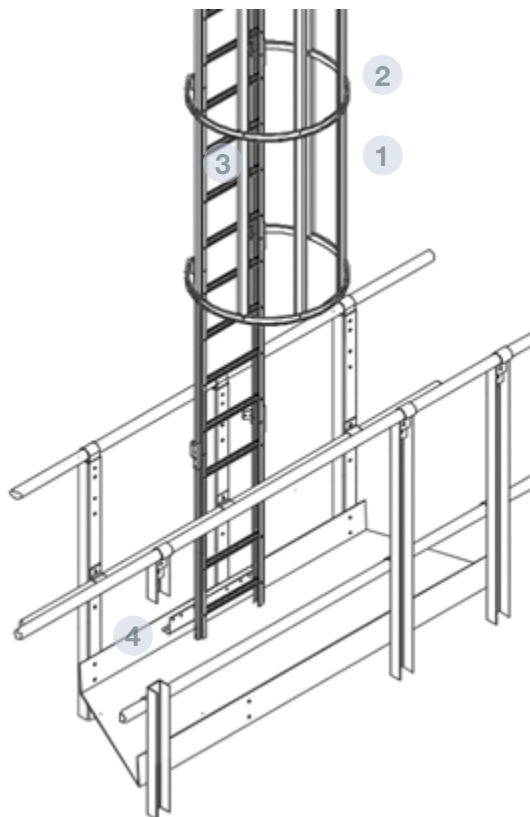
COD AS**ESC



TECHNICAL SPECIFICATIONS

Vertical ladder from the catwalk between silos to the main catwalk, complying with the regulation UNE-EN ISO 14222-1/2/3/4.

The ladder is connected to the platform through an angular profile and to the catwalk through the ladder support.



PARTS Y MATERIALS

- 1** RAIL
 - 5 rails located every section of 1140mm.
 - MATERIAL: Galvanized steel S 280 GD Z 600 t= 1.5 mm
- 2** SAFETY CAGE
 - 1 every section of 1140 mm
 - MATERIAL: acero galvanizado S 280 GD Z 600 t= 2 mm
- 3** RUNGS
 - Connected every 285mm section.
 - Length: 458 mm
 - MATERIAL: Galvanized steel S 280 GD Z 600 t= 1.5 mm
- 4** RAIL SUPPORT
 - Connecting the catwalk to the silo
 - MATERIAL: Galvanized steel S 280 GD Z 600 t= 3 mm
- 5** CONNECTION TO THE PLATFORM
 - "L" 60x100x600 cold formed profile for the ladder-platform connection. Galvanized steel S 280 GD Z 600 t= 3 mm



Offices and Factory:

Ctra. de Arenas km. 2.300
13210 Villarta de San Juan • Ciudad Real - Spain
T: +34 926 60 294

Madrid Office:

C/Azcona, 37 • 28028 Madrid - Spain
T: +34 91 726 43 04

symaga@symaga.com
www.symaga.com