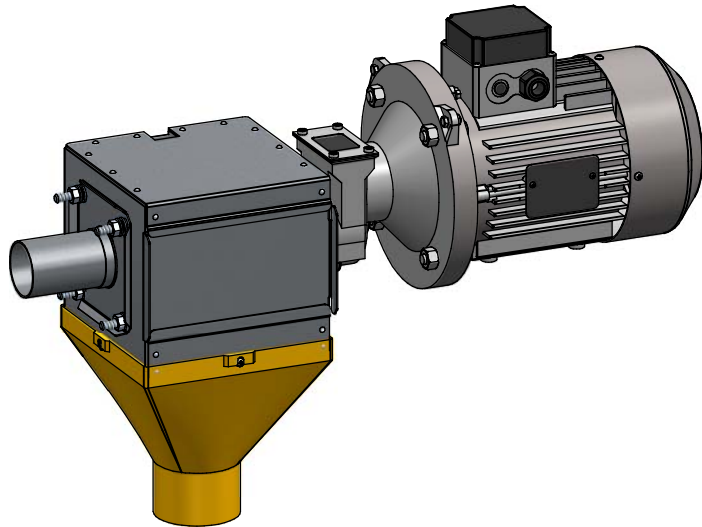


// CONTROL UNIT INOX



 **SYMAGA**

// INOX CONTROL UNIT

HIGH SENSITIVITY SENSOR

Mecanic safety sensor. High sensitivity to start the engine, avoiding breakdowns.

RANGE

Available in diameters 55, 75 and 90 and two models of 125mm.

EASY ACCESS TO INTERIOR

Through an opening, for maintenance.

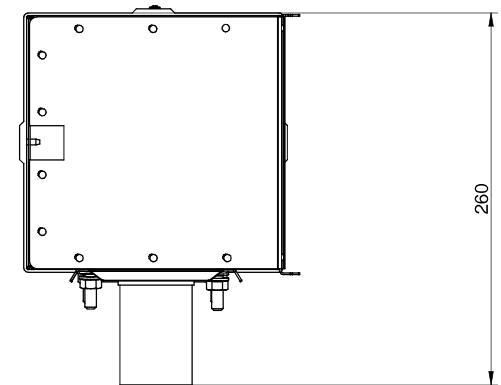
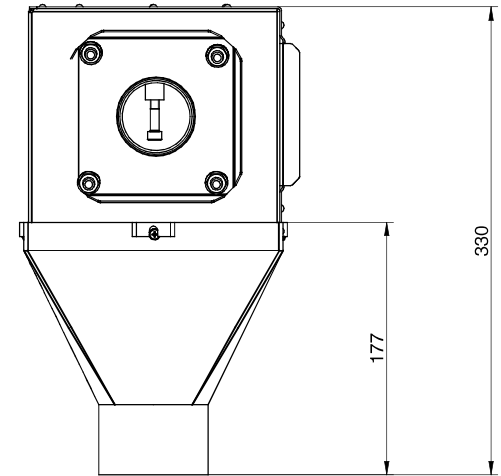
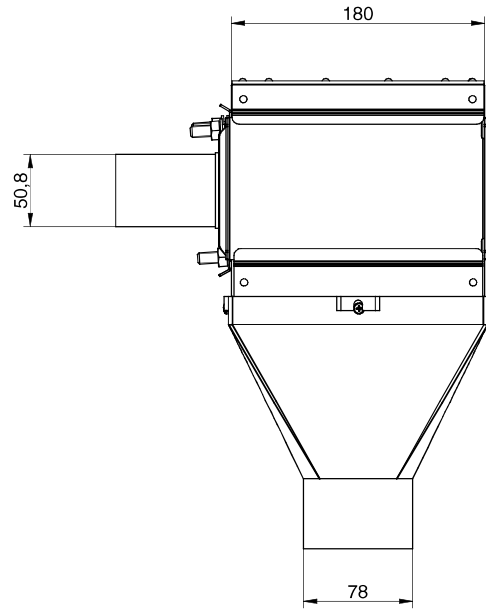
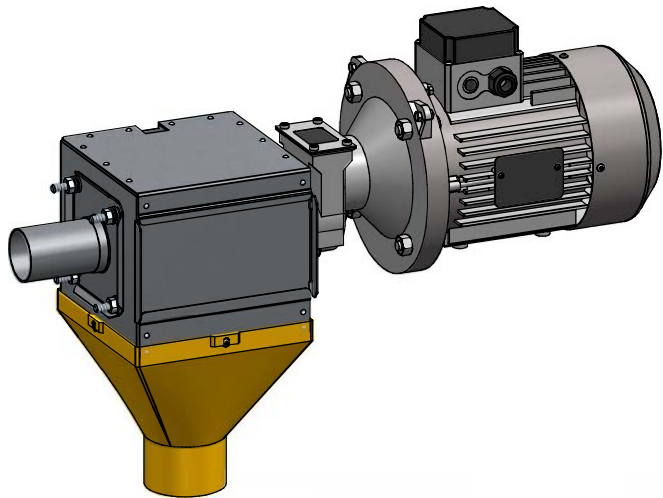
COMPLEMENTS

Transparent flexible tube.

Connection to flexible tube by thread.



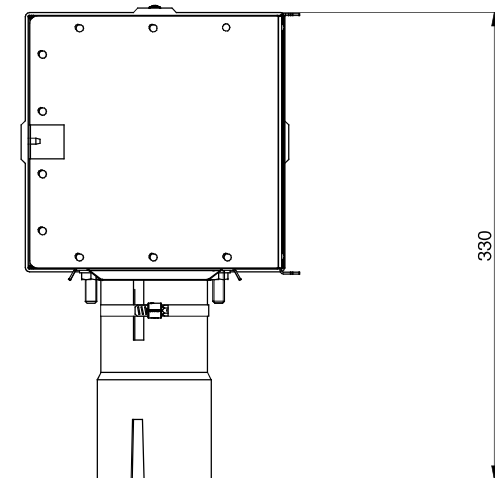
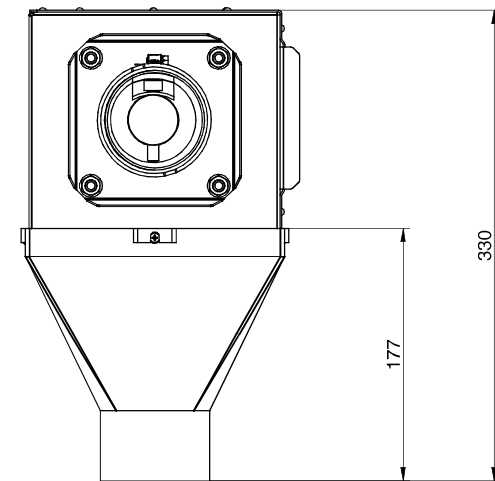
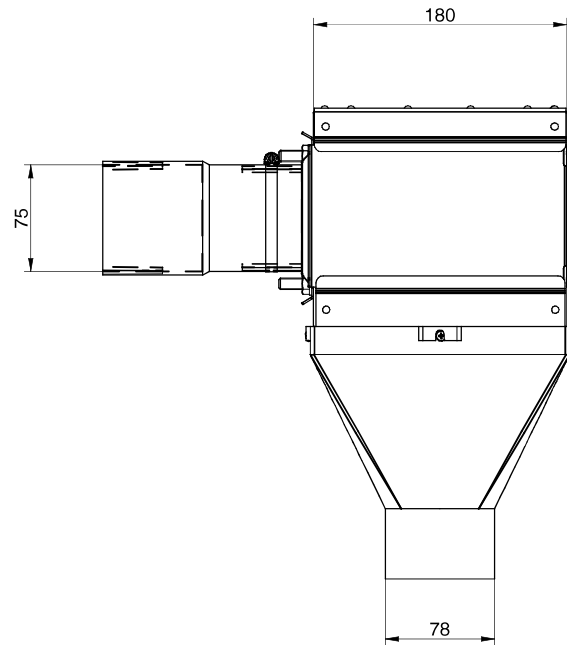
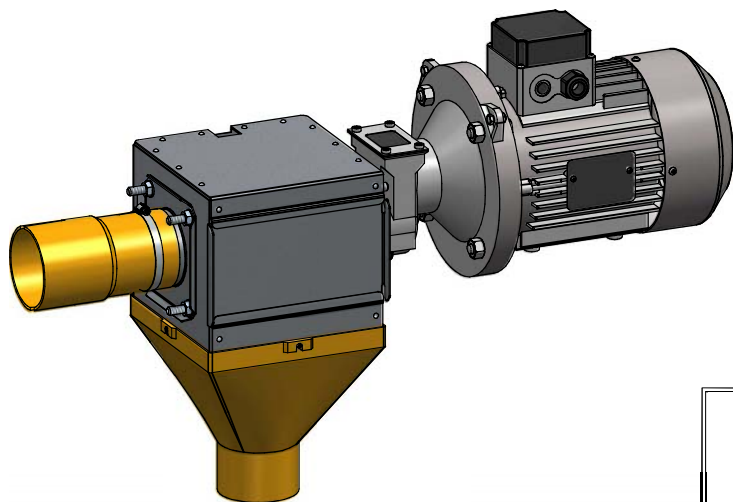
 **SYMAGA**



Unidad de control Ø55 mm inoxidable para eje Ø22
 Stainless steel control unit for Ø55 mm for axe Ø22
 Unité de contrôle Ø55 mm acier inoxydable pour axe Ø22

S/E

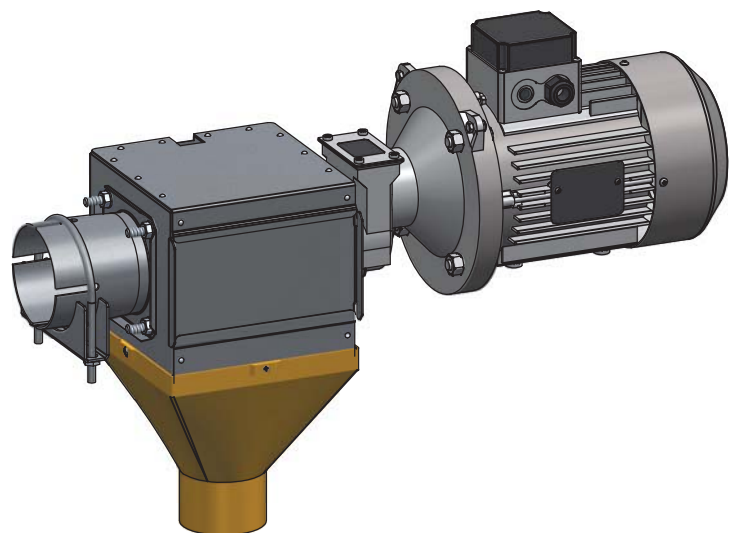
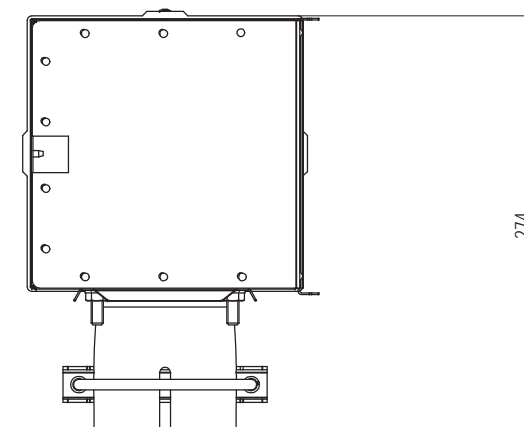
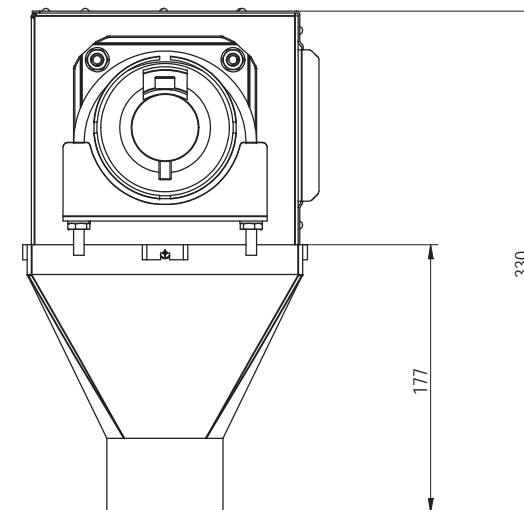
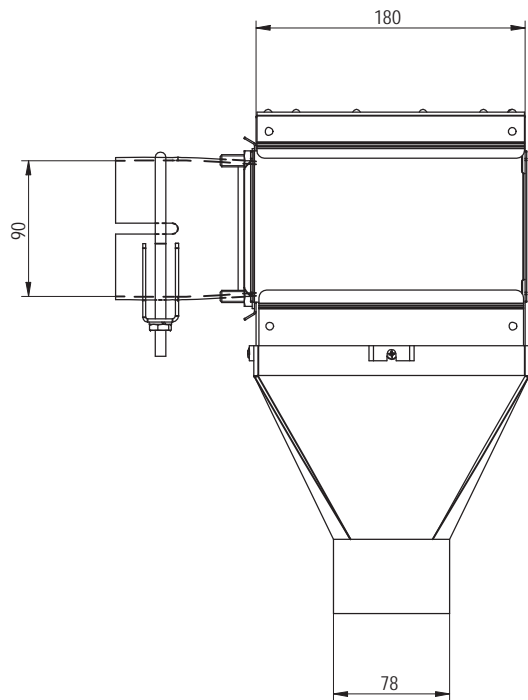
COD: G02012011000



Unidad de control Ø75 mm inoxidable para eje Ø22
 Stainless steel control unit for Ø75 mm for axe Ø22
 Unité de contrôle Ø75 mm acier inoxydable pour axe Ø22

S/E

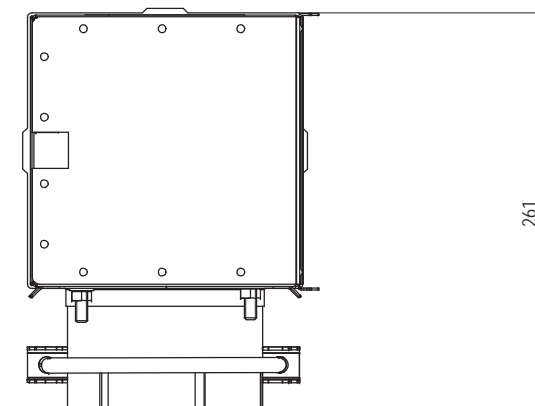
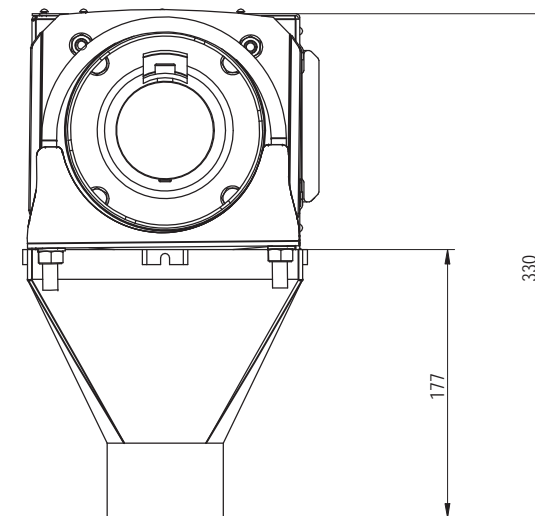
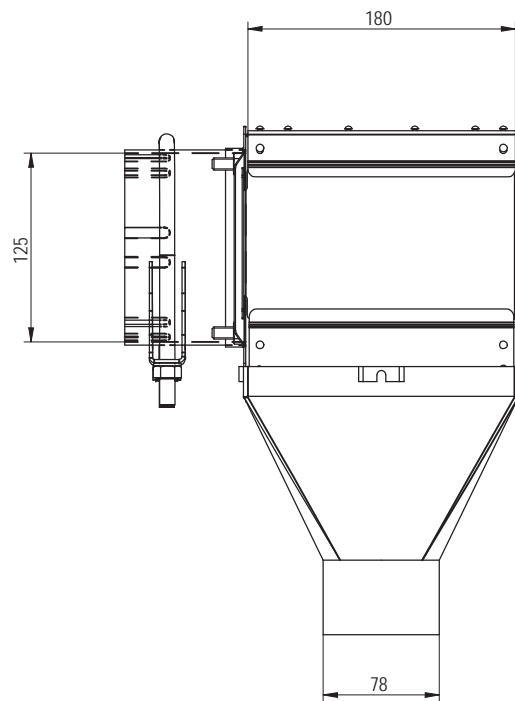
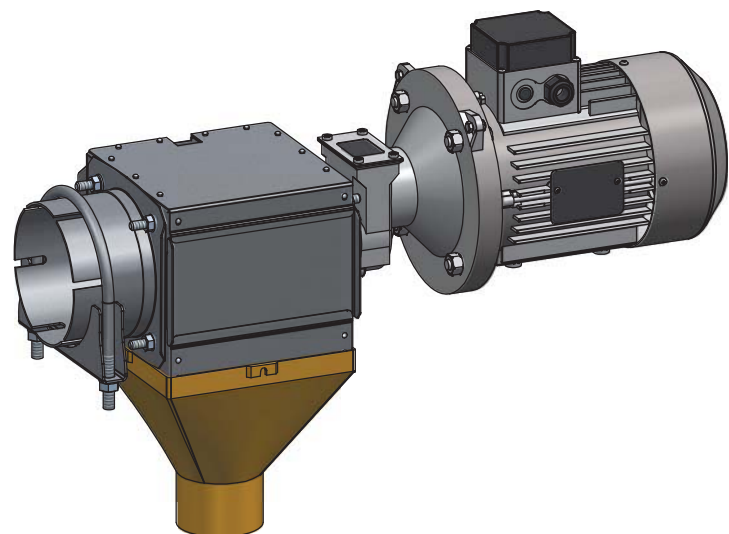
COD: G02012021000



Unidad de control Ø90 mm inoxidable para eje Ø22
 Stainless steel control unit for Ø90 mm for axe Ø22
 Unité de contrôle Ø90 mm acier inoxydable pour axe Ø22

S/E

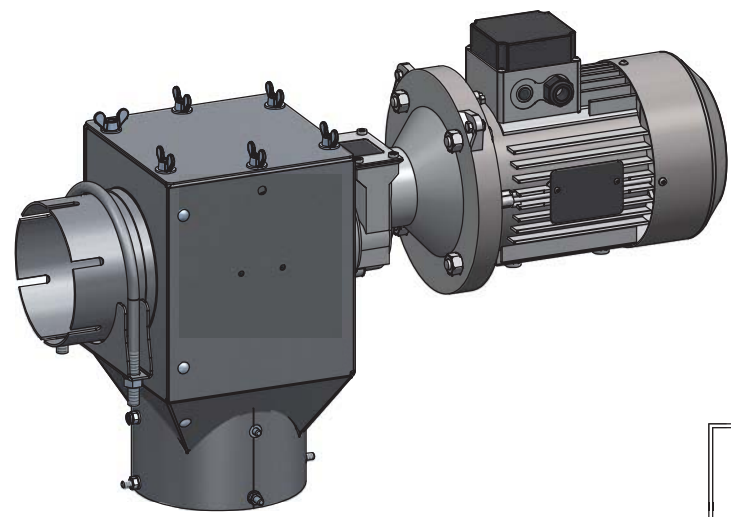
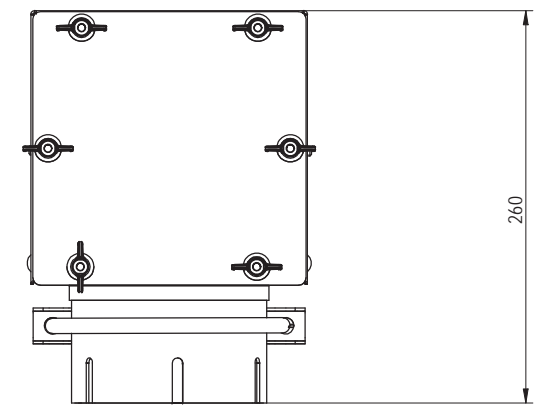
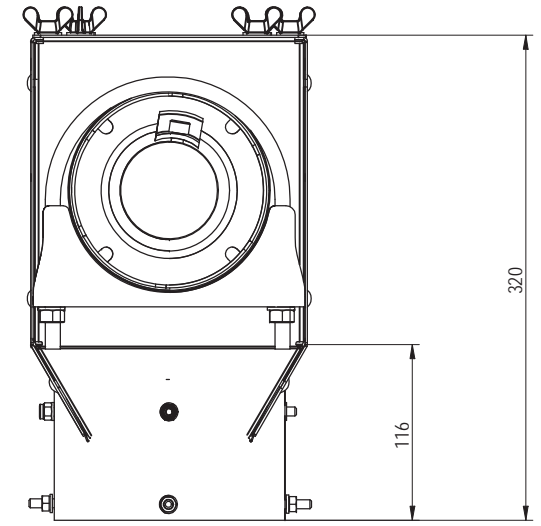
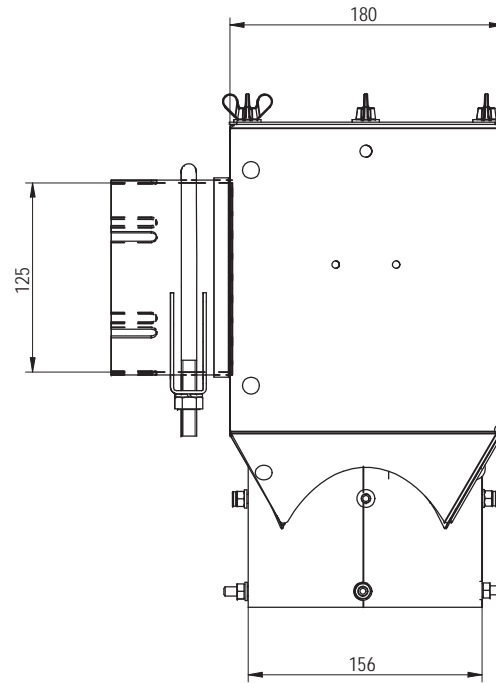
COD: G02012031000




Unidad de control Ø125 mm inoxidable para eje Ø22
 Stainless steel control unit for Ø125 mm for axe Ø22
 Unité de contrôle Ø125 mm acier inoxydable pour axe Ø22

S/E

COD: G02012041000



	Unidad de control Ø125 mm inoxidable salida Ø156 Stainless steel control unit for Ø125 mm outlet Ø156 Unité de contrôle Ø125 mm acier inoxydable sortie Ø156		
			S/E
			COD: G02012042000

Symaga se reserva el derecho de modificar el precio o las características técnicas sin previo aviso.

www.symaga.com
symaga@symaga.com

Office and Factory
Ctra. de Arenas, km. 2,300
13210 Villarta de San Juan
Ciudad Real - Spain
T: +34 926 640 475

