

## Aeration system. Gutter SBH. Hopper. Accessories. Aeration system

**AERATION GUTTER SYSTEM SBH**

**ACCESSORIES AERATION SYSTEM**



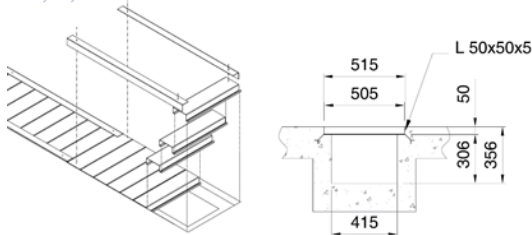
FILE 5.33  
VERSION 3. 22/06/2021

**COD. ASBH\*\*\*\*AY, ASBH1070A, ASBH\*\*\*\*H, ASBH\*\*\*\*AH, ASBH3208H315, ASBH0A, ASBH\*\*\*\*AC, ASBH\*\*\*\*AT, ASBH\*\*\*\*AY10, ASBH\*\*\*\*10, ASBH\*\*\*\*AH10, ASBH3208AH310, ASBH\*\*\*\*AC10, ASCE\*\*\*\*AT10**

**TECHNICAL SPECIFICATIONS**

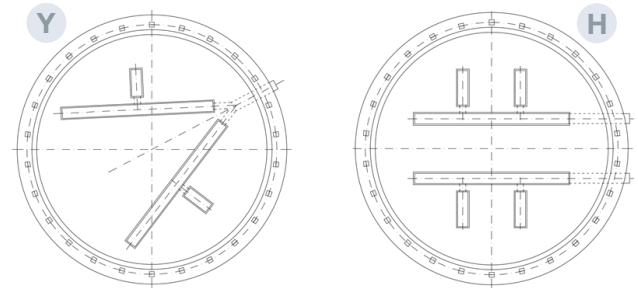
Group of channels and structures located at the silo bottom for its aeration from the bottom to the roof. Channels are covered by the floor planks (1) drilled with Ø1.5mm holes (R3T1.5) and Ø1mm holes (R2T1). The 1mm floor planks cannot be installed in silo with bottom pressures bigger than 8 Tn/ m2. The 1,5mm ones are capable of withstanding bigger pressures (12 Tn/ m2). The drilling percentage is 23%.

**Y, H, C. STANDARD AERATION**

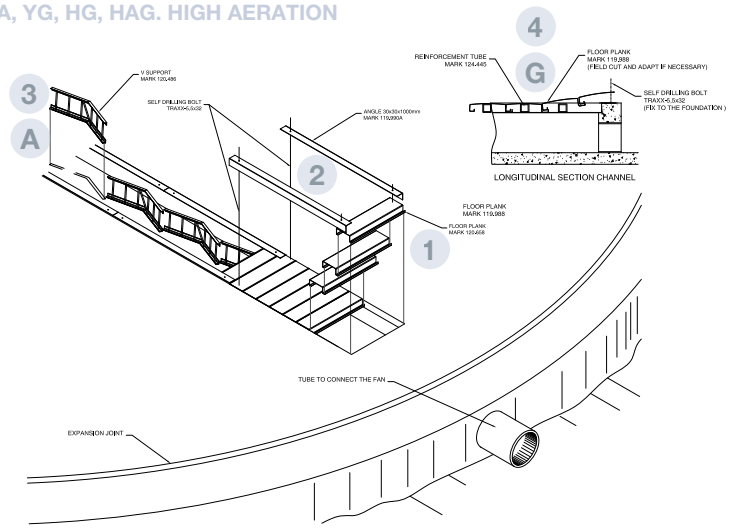


**TYPES**

- A TYPE Y**
  - Made by a group of Y channels for 1 fan connection only.
  - Channels width is 505mm.
  - Silo 4,60-12,23 m. 9% of the aeration surface on the total bottom silo surface.
- B TIPOS YG**
  - Models reinforced with structural tube for higher loads.
  - Silo 9,93-12,23 m.
- C TYPE H**
  - Made by a group of H channels for either 2 or 4 fan connection.
  - Channels width is 505mm.
  - Silo 10,70-17,57 m. 12% of the aeration surface on the total bottom silo surface.
- D TIPOS HG**
  - Models reinforced with structural tube for higher loads.
  - Silo 1070-1757 m.
- G TYPE HA (HIGH PERFORMANCE AERATION SYSTEM)**
  - Made by a group of H channels for either 2 or 4 fan connection.
  - Channels width is 705 mm.
  - Floor planks are supported on "V" supports.
  - La superficie de ventilación es del 18% sobre el total de la superficie del fondo del silo
  - Silo 14,51-32m.18%12% of the aeration surface on the total bottom silo surface.
- H TYPE HAG (HIGH PERFORMANCE)**
  - Reinforced with "v" supports and structural tube, with a surface area of approx. 34.11 m2 (approx 18.7%)
  - Silo 15,28-32 m.
- I TYPE C**
  - For conical bottom silos.
  - Made by channels with same dimensions as Y and H
  - Not usable with silos with a diameter of 3-3.5 m and greater than 14.51 m. Except on request.



**HA, YG, HG, HAG. HIGH AERATION**



CARGAS LIMITE PARA LOS DISTINTOS SISTEMAS

TIPO	H	Ø/e	Tn/m2
H	500	1,5	12
HA	700	1,5	12
HAG	700R	1,5	20
H	500	1,0	8
HG	500R	1,0	9
HA	700	1,0	8
HAG	700R	1,0	15

**PARTS AND MATERIALS**

- 1 FLOOR PLANKS**
  - Folded sheet structures with 1mm or 1,5mm perforations. L= 500 mm (standard aeration) L= 700 mm (high aeration)
  - MATERIAL: Galvanized steel S280 GD Z 275 MACO
- 2 ANGLES**
  - Folded steel sheet profiles t= 1.5 mm
  - Dimensions: 30x30x1000 mm
  - MATERIAL: Galvanized steel S280 GD Z600 MAC
- 3 "V" SUPPORTS**
  - Structure made of angular and rounded profiles for floor planks supporting.
  - MATERIAL: Galvanized steel S275 JR
- 4 STRUCTURAL TUBE**
  - Galvanized 40x2 structural tube

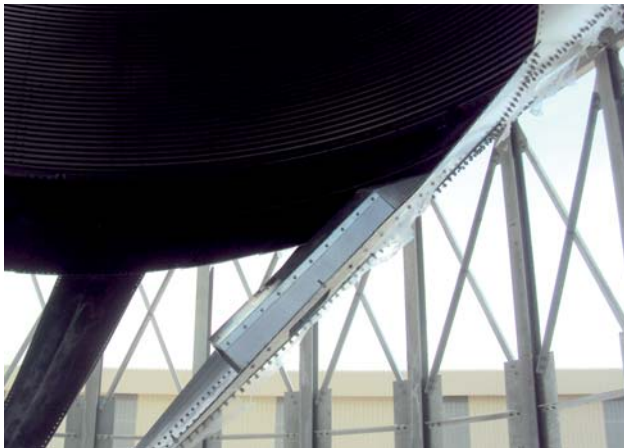
## HOPPER AERATION SYSTEMS SC

## ACCESSORIES AERATION SYSTEM



FILE 5.34  
VERSION 2. 13/08/2021

COD. ASCE0300AT10



## TECHNICAL SPECIFICATIONS

Group of channels with  $\varnothing 1$  mm or  $\varnothing 1.5$  mm perforations, installed on the hopper allowing the air flowing.

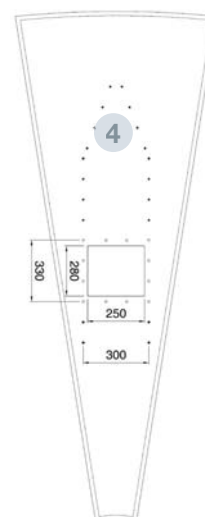
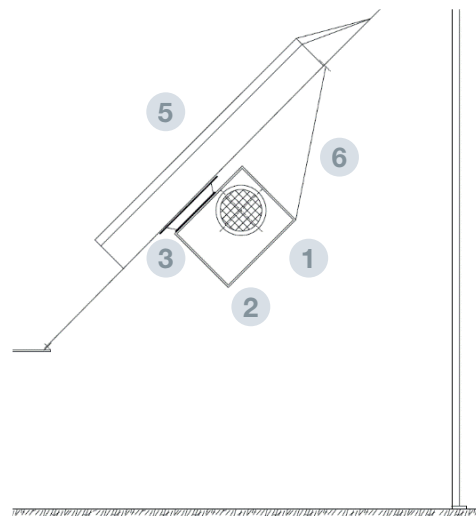
For its assembly, hopper sectors adapted for the fan connections are supplied.

Aeration channels are assembled from the inner part of the silo, while the fans are assembled from the outside.

The fan is connected to the silo through the transition supplied by Symaga. Also, it is needed to attach the fan to the hopper sector with a cable.

## PARTS AND MATERIALS

- 1 FAN**
  - Big power centrifugal fans with powers between 2 and 15 C.V.
  - Supplied by Sodeca.
- 2 FAN OUTLET**
  - Admission air conduit with sloped shape that avoids air coming into the system.
- 3 TRANSITION**
  - 4-5mm width steel sheet structures for the fan-aeration channel connection.
  - This accessory is not included by default.
  - MATERIAL: Galvanized Steel sheet S275 JR + HD6
- 4 HOPPER SECTOR FOR AERATION**
  - Hopper silo adapted to allow the fan connection.
- 5 AERATION CHANNEL**
  - Structure designed to make the air access to the silo easier.
  - Parts: Rigid cover avoiding the grain penetration in the channel and 2 perforated sheets at both sides avoiding air flowing inside the silo.
  - MATERIAL: Chapa de acero galvanizado S280 GD Z600 MAC e= 3mm
- 6 CABLE**
  - Not supplied by Symaga (RECOMMENDED)





**Offices and Factory:**

Ctra. de Arenas km. 2.300  
13210 Villarta de San Juan • Ciudad Real - Spain  
T: +34 926 640 4 75

**Madrid Office:**

C/Azcona, 37 • 28028 Madrid - Spain T:  
+34 91 726 43 04

[symaga@symaga.com](mailto:symaga@symaga.com)  
[www.symaga.com](http://www.symaga.com)