

COLUMN WITH HOT ROLLED PROFILES

ACCESSORIES SUPPLEMENTARY STRUCTURES



FILE 6.6
VERSION 3. 12/06/2024

COD. ASCOL06, ASSEVOLCOL06-07, ASVOLCOL06-07



TECHNICAL SPECIFICATIONS

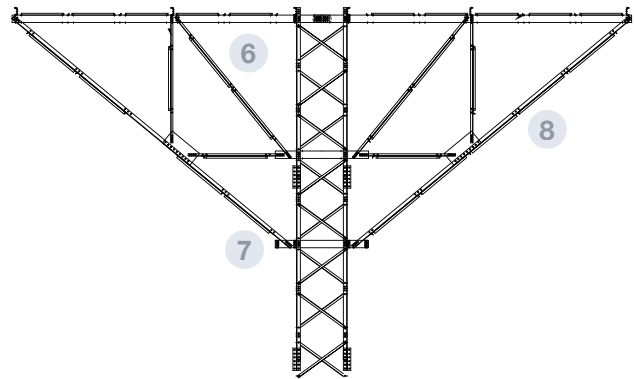
The structure acts as catwalk Support at the same height as the roof support.

Column erected from the ground to the roof Support height, braced to the silo with an overhang on the upper part. The overhang is formed by two structural systems (inverted pyramid shape), braced to each other.

When the column is located at the beginning or end of the walkway, its overhang is simple, only on one side.

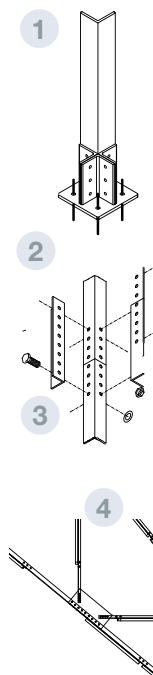
On the overhang, "C" profiles are placed supporting the catwalk.

Possible designs are:



PARTS AND MATERIALS

- 1 ANCHOR PLATE**
 - Connecting the pillars to the foundation.
 - Material: Galvanized steel S275JR
- 2 PILLAR "L"**
 - "L" 120x120x12 ó 150x150x5 profile, hot rolled profile, all along the column height.
 - Material: Galvanized steel S275 JR
- 3 SPLICE**
 - Rectangular splice 600x100x10mm or 600x120x10mm for pillars connection.
 - Material: Galvanized steel S275 JR
- 4 BRACING**
 - "L" 60x6 hot rolled profile.
 - Material: Galvanized steel S275 JR
- 5 CONNECTION TO SILO**
 - "L" 80x8 hot rolled profile connecting the column to the silo.
 - Material: Galvanized steel S275 JR
- 6 UPPER "UPN" PROFILE**
 - UPN200 profile, hot rolled profile supporting the "C" profile where the catwalk is placed.
 - Material: Galvanized steel S275 JR
- 7 LOWER "UPN" PROFILE**
 - UPN200 profile, hot rolled profile
 - Material: Galvanized steel S275 JR
- 8 DIAGONAL**
 - "L" hot rolled profile 80X8 , connecting the upper UPN to the lower one.
 - Material: Galvanized steel S275 JR



Models silo Ø	1375-2598	2750-3208
Column	ASCOL06 	ASCOL06
Simple overhang for start or end of silos	ASSEVOLCOL07 1240x2040x4800	ASSEVOLCOL06 1240x2040x7700
Overhang for the space between silos	ASVOLCOL07 1240x2040x4800	ASVOLCOL06 1240x2040x7700

These references apply to load up to 200kg/m.